



Page 314
**Vertical Toggle Clamp
with Adapter**



Page 315
**Horizontal Toggle Clamp
with Adapter**



Page 316
Combi Adapter 225



Page 316
Combi Adapter 100



Page 317
Quick-Change Clamp 100



Page 317
Quick-Change Clamp 160



Page 318
**Adapter with Hole Pattern Ø 50 / 15
for Toggle Clamp**



Page 318
**Adapter with Hole Pattern Ø 50 / 40
for Toggle Clamp**



Page 318
**Adapter with Hole Pattern Ø 50 / 70
for Toggle Clamp**



Page 318
**Adapter with Hole Pattern Ø 50 / 100
for Toggle Clamp**



Page 318
**Adapter Blank without Hole Pattern
Ø 50 / 15 for Toggle Clamp**



Page 318
**Adapter Blank without Hole Pattern
Ø 50 / 5 for Toggle Clamp**



Page 318
**Adapter Blank without Hole Pattern
Ø 50 / 40 for Toggle Clamp**



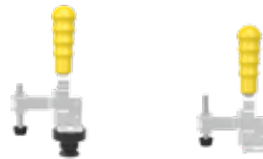
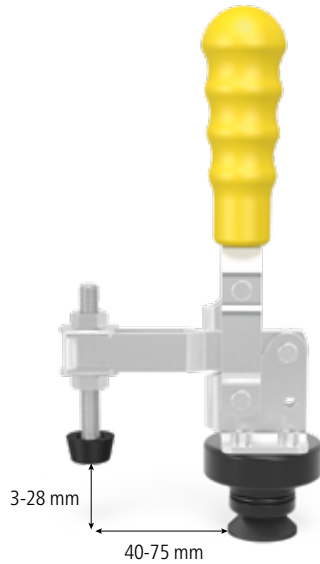
Page 318
**Adapter Blank without Hole Pattern
Ø 50 / 70 for Toggle Clamp**



Page 318
**Adapter Blank without Hole Pattern
Ø 50 / 100 for Toggle Clamp**



Vertical Toggle Clamp with Adapter



280705

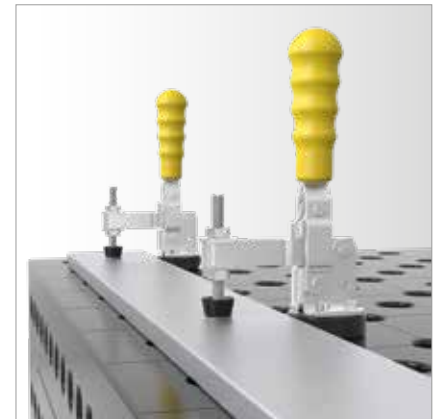
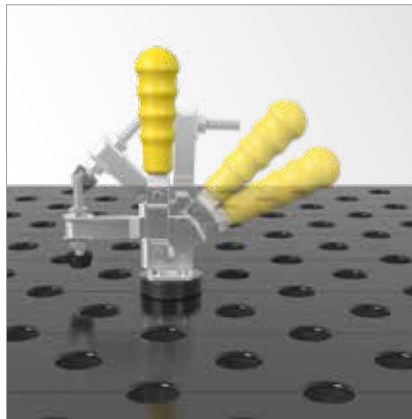
009082

Description:

Vertical Toggle Clamp with Adapter, universally usable with 28 mm bore holes. It works most effectively in combination with the Universal Stop (Item No. 280420.N).

The Adapter is replaceable. Further sizes see page 318.

Further Quick-Change Clamps can be found on the Internet at www.siegmund.com



	maximum load	Weight:	Item No.
Vertical Toggle Clamp with Adapter - Adapter 280715	1,8 kN	0,73 kg	2-280705 ●
Vertical Toggle Clamp		0,39 kg	2-009082 ●

● = Item produced for stock; ○ = Item produced on order; Explanations see page 84

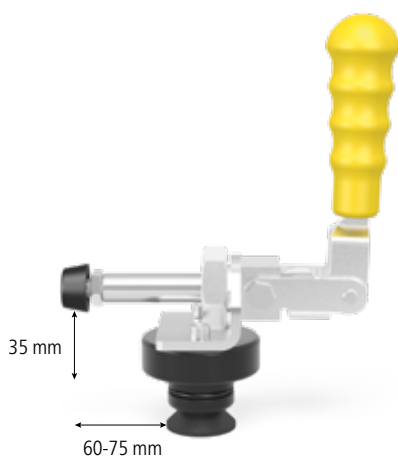
Horizontal Toggle Clamp with Adapter

Description:

Horizontal Toggle Clamp with Adapter, universally usable with 28 mm bore holes. It achieves maximum efficiency in combination with Universal Stop (Item No. 280420.N).

The Adapter is replaceable. Further sizes see page 318.

Further Quick-Change Clamps can be found on the Internet at www.siegmund.com



280710



009083



Horizontal Toggle Clamp with Adapter
- Adapter 280715

Horizontal Toggle Clamp

maximum load	Weight:	Item No.
2,5 kN	0,71 kg	2-280710 ●
	0,40 kg	2-009083 ●

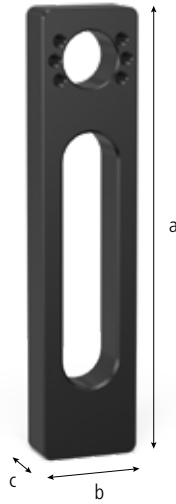
● = Item produced for stock; ○ = Item produced on order; Explanations see page 84



Combi Adapter 225 / 100

Description:

Combi-Adapter 225 and 100, specifically designed to serve as an intake for Siegmund quick release clamps. Mounting the quick-change clamps directly onto the Combi-Adapter is especially beneficial for work with low welding components. In addition, the Combi-Adapter can be used as a conventional universal stop.



280730.N



280730.1.N



		Length: (a)	Width: (b)	Height: (c)	Weight:	Item No.
Combi Adapter 225 - nitrided		225 mm	50 mm	25 mm	1,35 kg	2-280730.N ●
Combi Adapter 100 - nitrided		100 mm	50 mm	25 mm	0,80 kg	2-280730.1.N ●

● = Item produced for stock; ○ = Item produced on order; Explanations see page 84

Quick-Change Clamp 100 / 160

Description:

Vertical tensioner, universally applicable in System 28 boreholes. Clamping range can be set with adjusting screw.



280706



280707



	Length: (a)	Width: (b)	Height: (c)	Ø: (o)	Weight:	Item No.
Quick-Change Clamp 100 - Length clamping arm 100 mm - Clamping range 5-75 mm	340 mm	30 mm	150 mm	28 mm	1,20 kg	2-280706 ●
Quick-Change Clamp 160 - Length clamping arm 160 mm - Clamping range 0-75 mm	360 mm	30 mm	150 mm	28 mm	1,20 kg	2-280707 ●

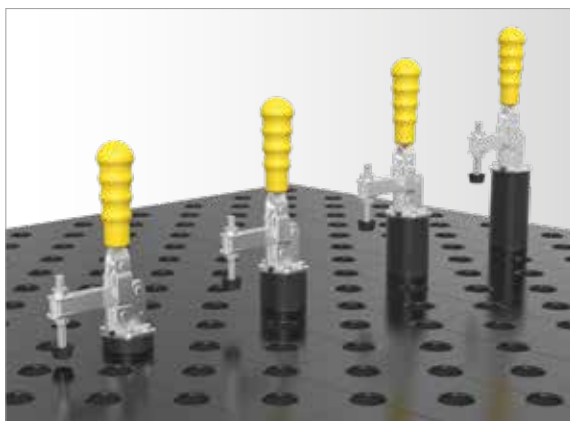
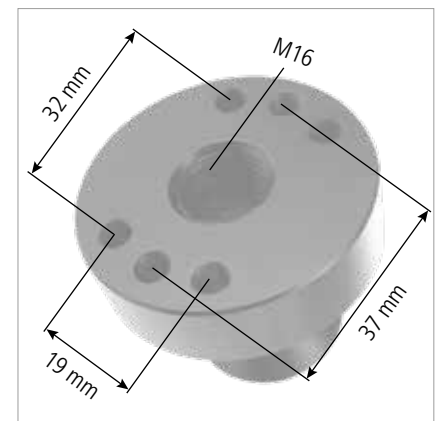
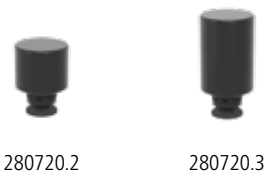
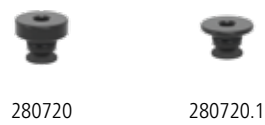
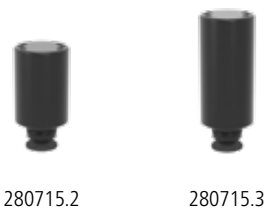
● = Item produced for stock; ○ = Item produced on order; Explanations see page 84

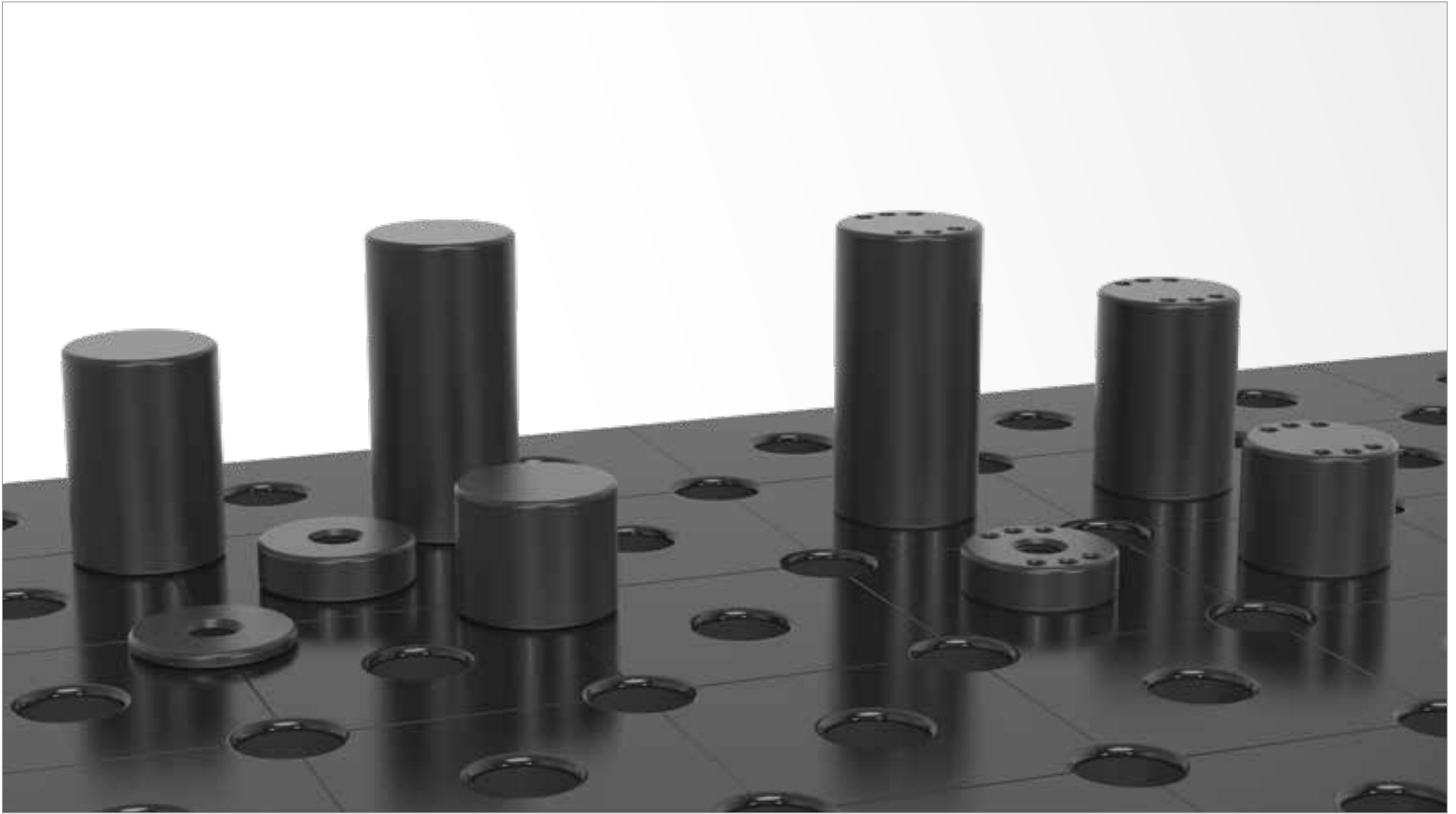


Adapter with Hole Pattern / Adapter Blank without Hole Pattern

Description:

Adapter with Hole Pattern, can be used universally with 28 mm bore holes. The integrated O-ring provides the perfect fit.





	Height: (c)	Ø: (o)	MS: (d)	Weight:	Item No.
Adapter with Hole Pattern Ø 50 / 15 - for Toggle Clamp - burnished	30 mm	50 mm	15 mm	0,30 kg	2-280715 ●
Adapter with Hole Pattern Ø 50 / 40 - for Toggle Clamp - burnished	55 mm	50 mm	40 mm	0,56 kg	2-280715.1 ●
Adapter with Hole Pattern Ø 50 / 70 - for Toggle Clamp - burnished	85 mm	50 mm	70 mm	1,00 kg	2-280715.2 ●
Adapter with Hole Pattern Ø 50 / 100 - for Toggle Clamp - burnished	115 mm	50 mm	100 mm	1,49 kg	2-280715.3 ●
Adapter Blank without Hole Pattern Ø 50 / 15 - for Toggle Clamp - burnished	30 mm	50 mm	15 mm	0,30 kg	2-280720 ●
Adapter Blank without Hole Pattern Ø 50 / 5 - for Toggle Clamp - burnished	20 mm	50 mm	5 mm	0,11 kg	2-280720.1 ●
Adapter Blank without Hole Pattern Ø 50 / 40 - for Toggle Clamp - burnished	55 mm	50 mm	40 mm	0,62 kg	2-280720.2 ●
Adapter Blank without Hole Pattern Ø 50 / 70 - for Toggle Clamp - burnished	85 mm	50 mm	70 mm	1,07 kg	2-280720.3 ●
Adapter Blank without Hole Pattern Ø 50 / 100 - for Toggle Clamp - burnished	115 mm	50 mm	100 mm	1,50 kg	2-280720.4 ●

MS=Material thickness; ● = Item produced for stock; ○ = Item produced on order; Explanations see page 84

